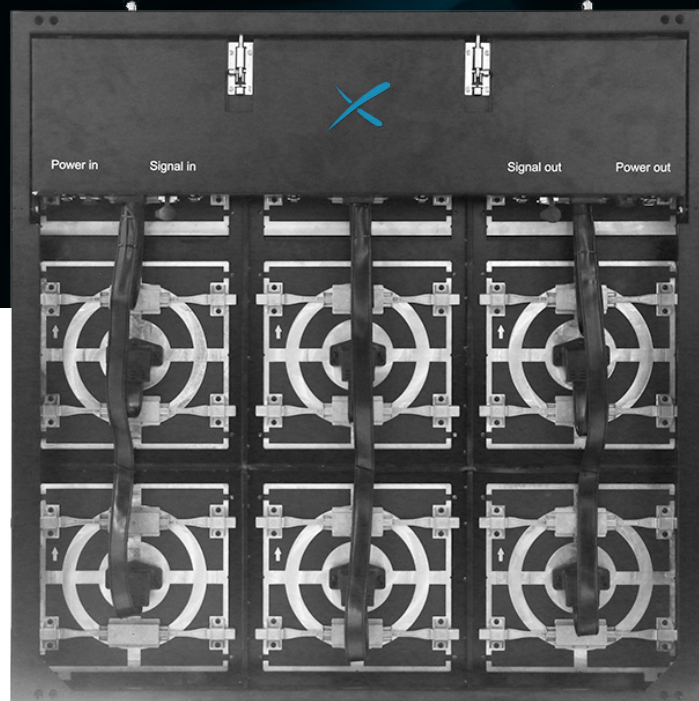




PLATINUM

FRONT & BACK MAINTENANCE LED DISPLAY





OVERVIEW

The PLATINUM is one of our most reliable products for outdoor applications, ranging from P5.3 to P10. Mostly suitable for an installation against a wall with no back access possibility, the PLATINUM is an excellent choice if you want an easy to integrate and reliable product with a long lifespan.



APPLICATION
Outdoor



BRIGHTNESS
≤ 6000 NITS (LED TYPE SMD)



INGRESS PROTECTION
IP66 (front) / IP68 (back)



WEIGHT
35 kg/cabinet



PIXEL PITCH
P5.3 P6.6 P8 P10



MATERIAL
Aluminum



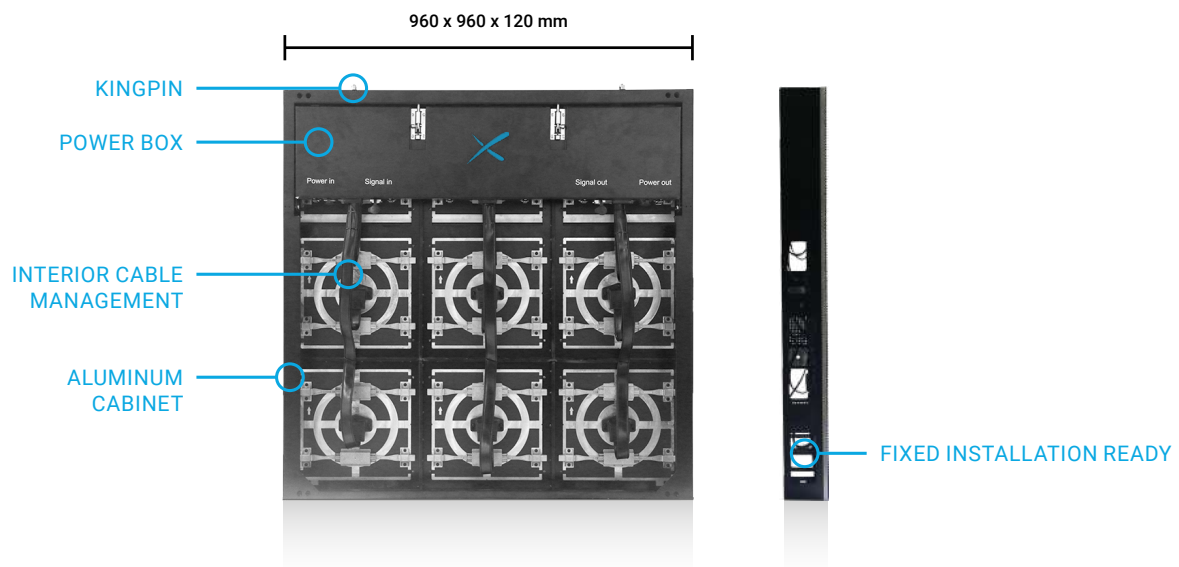
DISPLAY AREA (W x H)
960 x 960 mm



MAINTENANCE
Front & back maintenance



FEATURES



FAST & EASY INTEGRATION

While the cabinets are 35 kg each, the size of one cabinet being 960 x 960 x 120 mm, the integration of a large screen becomes relatively fast and limits the possibility of bad alignments. It's recommended to have two technicians on site for the integration considering the size and weight of one cabinet but maintenance can be done by only one technician with ease.



INTEGRATED HANDLES



EASY ALIGNMENT



POWER BOX ACCESSIBLE FROM THE FRONT
ONCE THE DISPLAY IS INTEGRATED

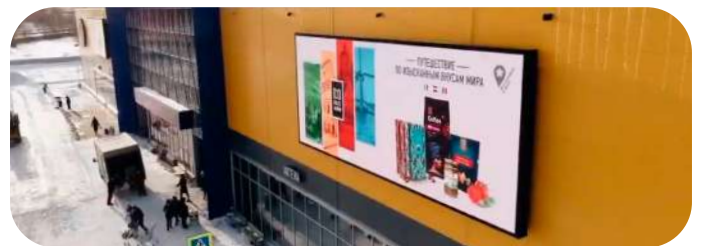
ROBUST LED DISPLAY

We designed the PLATINUM so it can handle extremely harsh weather conditions and perform in the most demanding environments. Additionally, the modules are made of die-casting aluminum to help a perfect and stable alignment while dissipating heat. The modules are waterproof and completely sealed (IP65 protection).



FRONT MAINTENANCE

The PLATINUM is the perfect cabinet for installations against walls where you usually can't access the back of your LED screen. With the help of a T-handle, you can remove the modules from the front to replace them easily.



AESTHETIC DESIGN

The PLATINUM is slim, simple, and minimal. The transportation handles are deployed and visible only when needed. The cable management is done from the inside of the cabinet. Most of the components visible on a standard cabinet are completely hidden and protected.



TECHNICAL SPECIFICATIONS

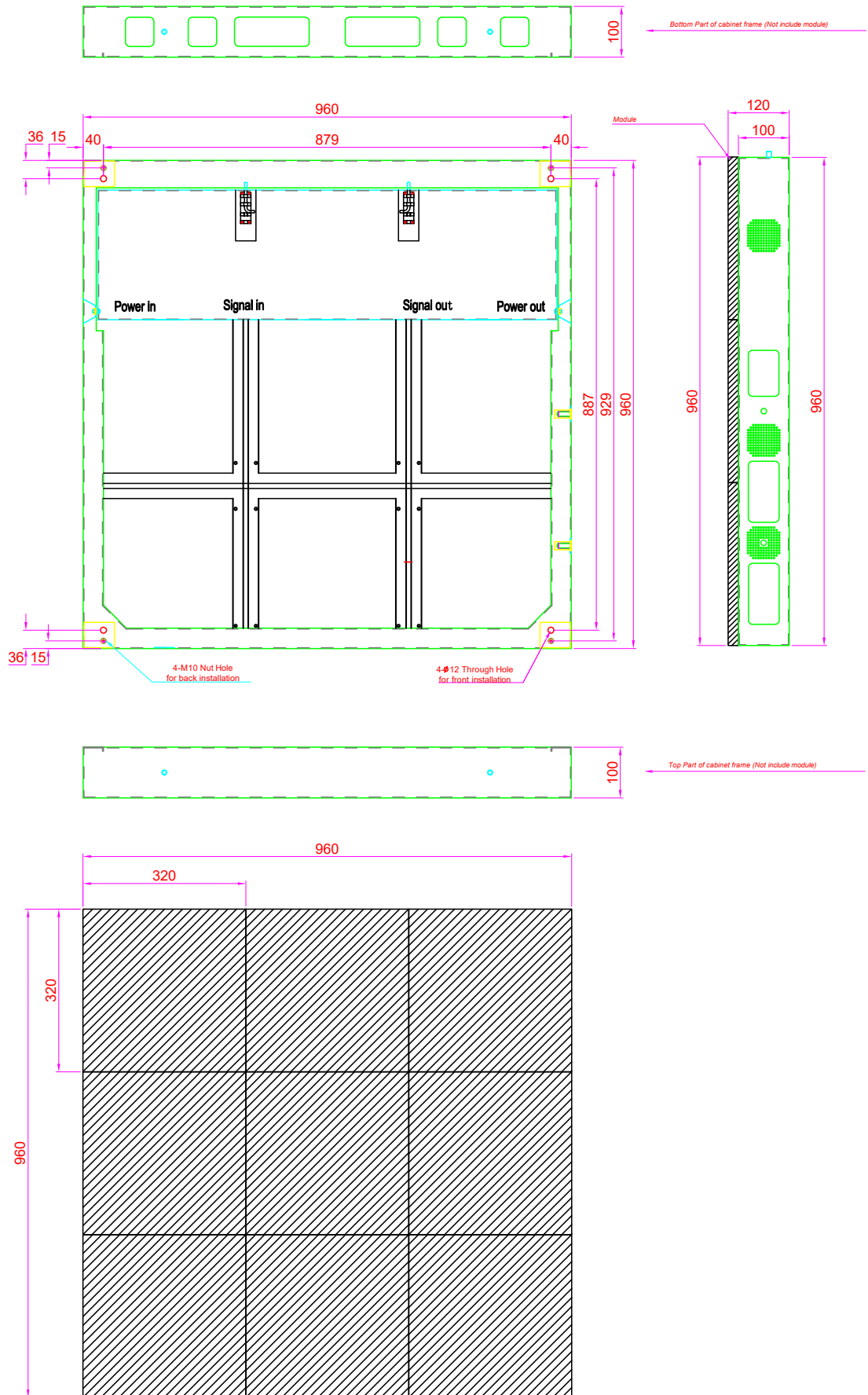
		OUTDOOR			
Product Parameters	Unit	5.3	6.6	8	10
Pixel Pitch	mm	5,33	6,67	8	10
LED		SMD2727 3in1 (Black Face)			SMD3535 3in1 (Black Face)
Application		Media			
Ingress Protection	IP	IP66 (Front) / IP68 (Back)			
Brightness	cd/sqm	≤ 6000 Nits @5volts			
Color Temperature after calib (adjustable)	deg. K	6500			
Viewing Angle (50% brightness)	deg.	140(+/-70) H / 140 V			
Cabinet Size (WxHxD)	mm	960 x 960 x 120			
Display area (WxH)	mm	960 x 960			
Module Size (WxHxD)	mm	320 x 320 x 20			
Pixel Matrix Per Cabinet (WxH)	px	180 x 180	144 x 144	120 x 120	96 x 96
Pixel Matrix Per Module (WxH)	px	60 x 60	48 x 48	40 x 40	32 x 32
Pixel Density	px/sqm	35156	22500	15625	10000
Weight of cabinet	kg	35			
Cabinet Material		Aluminum			
Maintenance Mode		Front & back			
Mask specification		95% Plastic + 5% Fiber / SS Screws / Shaders / Backshell in Aluminum + PC			
Contrast Ratio		High			
Grey scale (linear)	bit	16			
Brightness control	bit	16			
Processing depth	bit	16			
Color		281 Trillions			
Display Refresh Rate	Hz	3840			
Operation Power	V	AC85-230V			
Max. Power Consumption	W/sqm	900			
Average Power Consumption	W/sqm	300			
Control Mode		Synchronization			
Video Frame Rate	Hz	50/60Hz			
Input Types Supported		DVI / SDI / HDMI			
3D ready (optional)		Yes			
Calibration		Yes			
Lifetime (50% brightness)	h	50000			
Operating Humidity Range		10-95%			
Operating Temperature Range		-20°C / +60°C			
Screen Uniformity Correction		-			
Certification		CE / ETL / CCC / PSE / UL / CB / FCC / EMC			
Available options		Neutrik outdoor connectors, size can be customised			
Compatibility		-			



Information and design in this leaflet are subject to Artixium France SAS copyright. No material from this leaflet can be used in any context without ARTIXIUM approval. Designs and specifications are subject to change without notice. All images of ARTIXIUM products components and accessories used here are also subject to change without notice. All information presented herein is based on the latest information at the time of publishing. Actual results of performance and other specifications may differ or vary with production models and may depend on selected options and model ranks.



TECHNICAL DRAWINGS





CONTACT

The Artixium regional branches are the key for the growth and development of our global network all over the world. Artixium's team is a spectrum of different nationalities and cultures, reflecting their global presence and mindset, mak-

ing their communication smooth and hassle-free with clients from all around the world. Customer care, Innovation and flexibility has always been our values and we intend to keep this reputation for many years to come.

ARTIXIUM FRANCHISES

"From your project's conception to its completion."



112 Avenue Franklin Roosevelt
69120 Vaulx-en-Velin
France



Artixium Operational Center
518000 Shenzhen
China




Weissensteinstrasse 90b,
46149 Oberhausen
Germany




Merkez Mah. Baglar Cad. A
Blok Apt. No: 14D/13 Kagithane, Istanbul
Turkey




 www.artixium.com

 0 428 001 801

 [linkedin.com/company/artixium](https://www.linkedin.com/company/artixium)

 twitter.com/artixium

 contact@artixium.com

 [youtube.com/@artixium](https://www.youtube.com/@artixium)

 [facebook.com/artixium](https://www.facebook.com/artixium)

 [instagram.com/artixium](https://www.instagram.com/artixium)



Since its creation in 2012 by two european entrepreneurs, Artixium has been evolving and always looking for innovative ways to contribute to the digital transition of our world. It only took a few years for Artixium to become a key player in the LED display industry.

www.artixium.com